

All In: Data for Community Health 2020 National Meeting
December 10, 2020

Presented by:
DASH (Data Across Sectors for Health)
CHCS (Center for Health Care Strategies)

**Data Across
Sectors for Health**

CHCS Center for
Health Care Strategies, Inc.



Thought-leader Insights on State-Community Partnerships for Improving Health, Equity and Well-Being



Agenda



- I. Welcome and Introductions
- II. LAPP Initiative: Background, Purpose, and Objectives
- III. Thought-leader Insights on State-Community Partnerships for Improving Health, Equity and Well-Being
- IV. Interactive Discussion: Reflections and Experiences with State-Community Partnerships
- V. Adjourn

Today's Presenters



Amanda Cavanagh, Senior Program Manager, DASH



Alissa Beers, Associate Director, CHCS

Data Across Sectors for Health (DASH)



DASH is led by the Illinois Public Health Institute, in partnership with the Michigan Public Health Institute, with support from the Robert Wood Johnson Foundation.



Robert Wood Johnson Foundation

Our View of Multi-Sector Collaboration



All In: Data for Community Health



ALL IN



Current Partners:



BUILD
Health
Challenge



Data Across
Sectors for
Health



Network for
Public Health
Law



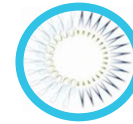
New Jersey
Health
Initiatives



Public Health
National
Center for
Innovations



Population
Health
Innovation
Lab



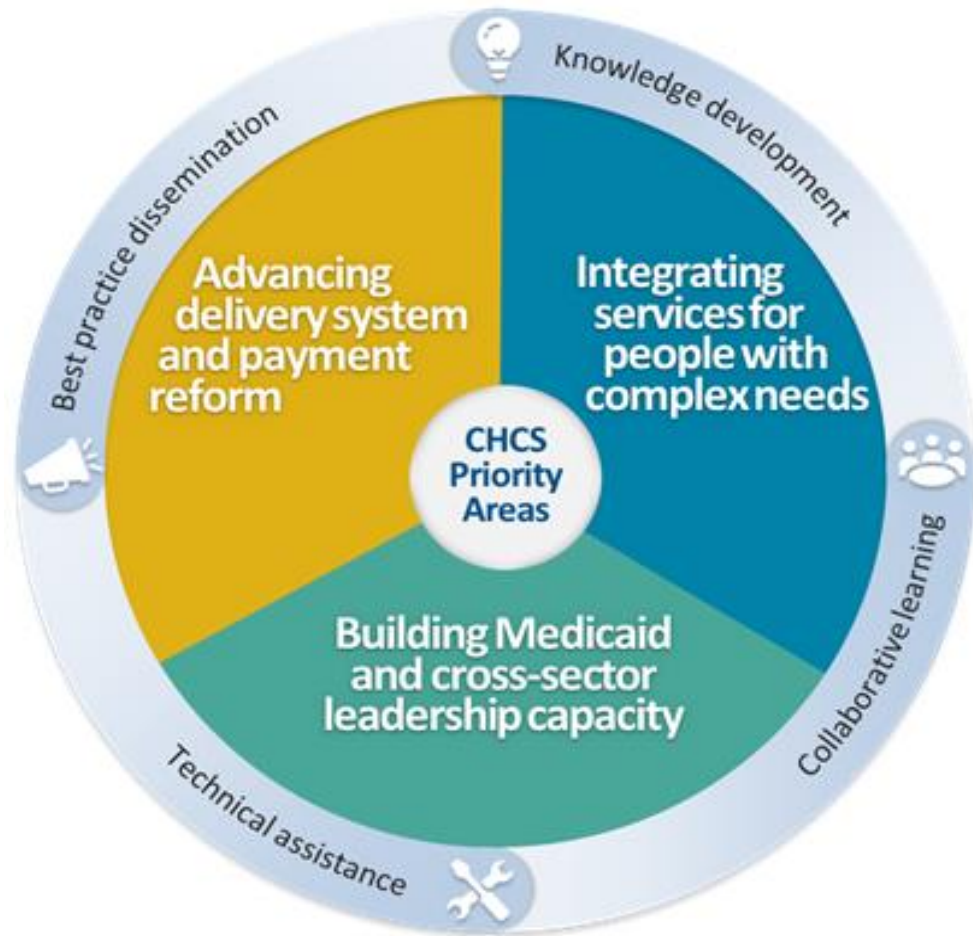
Pew Charitable
Trusts
Health Impact
Project

Past Partners: Community Health Peer Learning Program, Connecting Communities and Care

Center for Health Care Strategies (CHCS)



A nonprofit
policy center
dedicated to
improving
the health of
low-income
Americans



LAPP Purpose and Activities



- The purpose of the Learning and Action in Policy and Partnerships (LAPP) Program is to enable communities to develop community-state partnerships to inform inclusive policy and systems alignment at both the community and state level.
- LAPP offers awardees targeted funds and direct technical assistance to build the capacity of their community's data ecosystem to initiate, strengthen, and leverage relationships with the state government to improve health, well-being, and equity outcomes.

Primary Activities

- Advance and existing multi-sector data-sharing project
- Build skills and capacity at the community and state level
- Build the foundation for sustainable policy and systems change

Community and State Partnerships



What roles can states and communities play in multi-sector data sharing?

Examples of bi-directional support for Community and State multi-sector data sharing

Data access

Community-level data can drive integration and inform state policy, and states may have data that is needed by communities.

Shared services, systems

States may develop or purchase systems that can be made available to communities (e.g., social services referral platform).

Interoperability rules

Communities and states may play a role in developing standards or guidance to ensure data across sectors can be linked

Financing

States can change how services are paid for to align incentives; and support communities' sustainable infrastructure development.

MCO contracting

States can integrate language into Managed Care Organization (MCO) contracts that encourages collaboration with communities (e.g., social services referrals).

Policy and legal clarity

States can clarify how regulatory aspects of data sharing will impact local efforts and shape policy changes.

LAPP Awards



- Up to 5 awardees
- Up to \$100,000 per award
- 1 year project duration

Timeline



Opportunity Analysis



Through key informant interviews 30 individuals, including state officials, leaders of community-based organizations, and other experts, DASH and CHCS aimed to answer:

- *What are specific opportunities to leverage improved data-sharing through state-community partnerships to achieve health or equity outcomes?*
- *What are examples of successful community-state multi-sector data sharing efforts to improve health/advance equity?*
- *What were the contributing success factors?*
- *What are the potential effects and/or leverage opportunities associated with new federal resources to support data sharing and integration?*
- *What are current strategic priorities at the community and state-levels?*
- *How could improved partnerships to support data-sharing align with or advance work toward those priority aims?*

Key Themes



Current Priorities

- COVID-19 Response Efforts
- Efforts to Advance Health Equity
- Population Health and Prevention Efforts

Emerging Opportunities

- Federal or National Resources
- Leveraging Existing Efforts

Key Success Factors

- Committed and Engaged Leadership
- Clear, Equitable Data Governance Infrastructure
- Shared Understanding, Trust, and Accountability

Key Considerations: Support to State-Community Data-Sharing Partnerships



Address power dynamics

Build cross-sector, data-sharing capacity

Facilitate cross-sector learning and collaboration within and across participating sites

Increase access to relevant resources

Summary



- This national analysis provides valuable insights into current and emerging priorities that are key opportunities for meaningful state-community partnership.

Interactive Discussion



- *In reflecting on your own data-sharing efforts, what resonates most from the insights shared? Least?*
- *Where do you see opportunities to leverage state-community partnerships to support data-sharing efforts to achieve health and equity outcomes?*
- *In what ways could state partnership and support for community-level data sharing advance efforts?*
- *What do you perceive as potential strategies for improved data sharing toward shared health outcomes from a local, state, or national level?*

Questions?



LAPP Homepage

www.dashconnect.org/lapp



info@dashconnect.org

Learning and Action in Policy and Partnerships (LAPP)

With support from the Robert Wood Johnson Foundation (RWJF), Data Across Sectors for Health (DASH) in partnership with the Center for Health Care Strategies (CHCS), is pleased to launch the *Learning and Action in Policy and Partnerships* (LAPP) program. LAPP will provide award opportunities to community organizations who are partnered with their state government to advance community-led programs focused on data-sharing efforts to improve health, equity and well-being.

The objective of LAPP is to facilitate aligned efforts among multi-sector community and state partners that will build a foundation for sustainable policy and systems change. The purpose of LAPP is to offer awardees targeted funds and direct technical assistance to build the capacity of their community's data ecosystem to initiate, strengthen, and leverage relationships with the state government to improve health, well-being, and equity outcomes. This award will provide access to funding and support to advance an existing, clearly defined project that aims to improve health, well-being, and equity with a policy or systems-change lens for sustainable impact.

All details for the LAPP Opportunity are included in [this brochure](#).

Request for Proposals

Application Due Date: **December 16th, 2020 at 3:30 PM EST**. Applications must be submitted via the [RWJF online system](#).

Informational Webinar: **October 26th, 2020 at 12:00 PM EST**. [Register for the webinar here](#).

Questions / Inquiries about the LAPP program can be sent to info@dashconnect.org with the subject "LAPP Program."

STAY INFORMED

Get the latest updates

Sign up for our newsletter

Connect with us



Contact Us



Questions and inquiries about the LAPP program can be sent to info@dashconnect.org with the subject “LAPP Program.”

Applicant questions will be posted on www.dashconnect.org/lapp

DASH does not guarantee answers to questions asked after December 4th, 2020.

Apply online using the [RWJF Online Application System](#)

